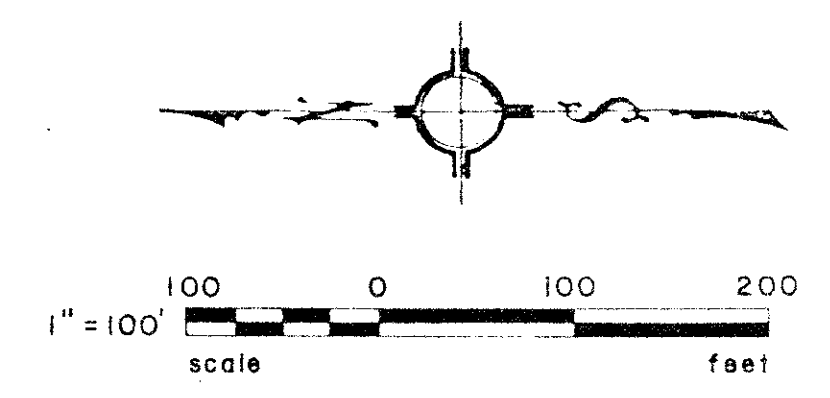


DRAWING NUMBER
52/131

131

A PLANNED UNIT DEVELOPMENT PLAT OF FOREST CLUB OF WELLINGTON P.U.D.

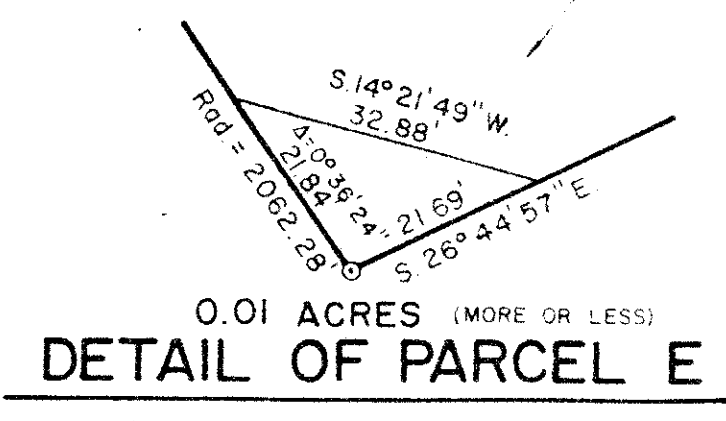
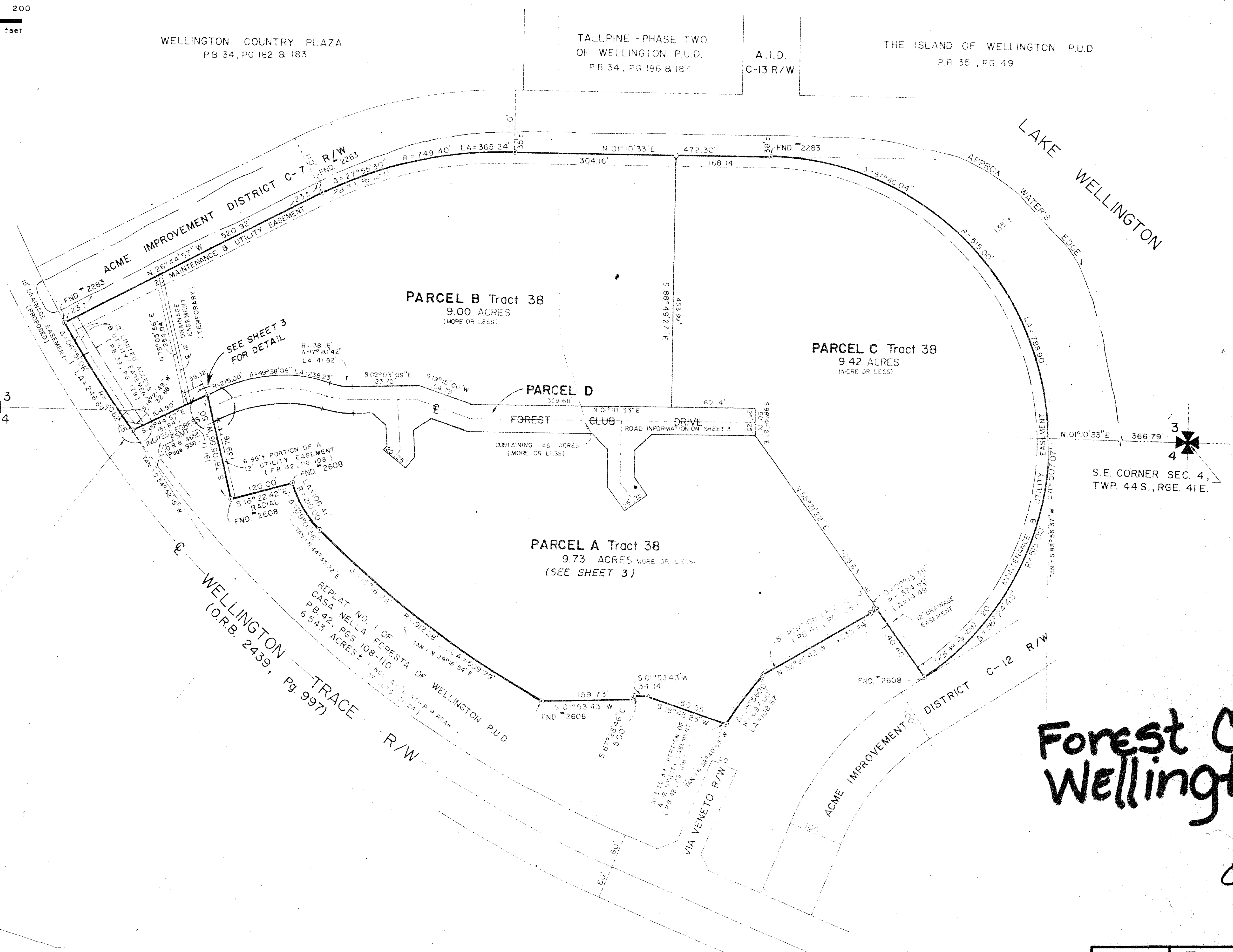
BEING A REPLAT OF A PORTION OF CASA NELLA FORESTA OF WELLINGTON P.U.D.,
AS RECORDED IN PLAT BOOK 39, PAGES 129 AND 130, PUBLIC RECORDS OF PALM BEACH COUNTY, FLORIDA
IN PART OF SECTIONS 3 AND 4, TOWNSHIP 44 SOUTH, RANGE 41 EAST, PALM BEACH COUNTY, FLORIDA
MAY, 1985 SHEET NO. 2 OF 3



DRAWING NUMBER

DRAWING NUMBER

DRAWING NUMBER



52/131

Forest Club of Wellington P.U.D.

019
0332-026

REF. 39/129	Donald D. Daniels, Inc.	SCALE: 1" = 100'
OFFICE BUSUTIL	PROFESSIONAL LAND SURVEYORS	NO. 84-135
DATE 5/20/85	1547 N. Florida Mango Rd. West Palm Beach, FLA. 33409 (305) 889-5706	SHT. 2 OF 3